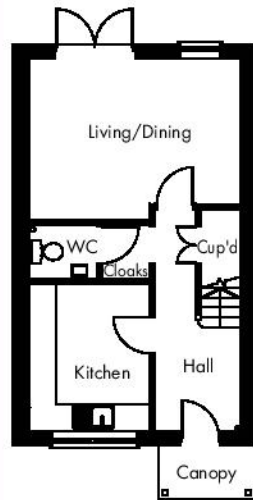


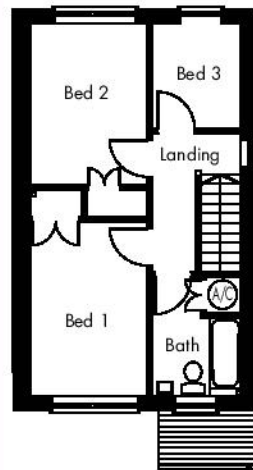
Skomer

Three bedroom end link

ground floor



first floor



	<i>Metric</i>	<i>Imperial</i>		<i>Metric</i>	<i>Imperial</i>
GROUND FLOOR			FIRST FLOOR		
Living Room	4.714m x 3.600m	15'5" x 11'10"	Bedroom 1	2.600m x 3.900m	8'7" x 12'10"
Kitchen	2.686m x 3.300m	8'10" x 10'10"	Bedroom 2	2.600m x 3.600m	8'7" x 11'10"
WC	1.500m x 1.200m	4'11" x 4'0"	Bedroom 3	2.000m x 2.350m	6'7" x 7'9"
Cloaks	1.186m x 1.200m	3'11" x 4'0"	Bathroom	2.000m x 2.650m	6'7" x 8'8"
Hall	1.914m x 4.614m	6'3" x 15'2"	Landing	2.000m x 3.100m	6'7" x 10'2"

All dimensions are approximate and subject to change. For illustration purposes only. Some features may vary from those shown.