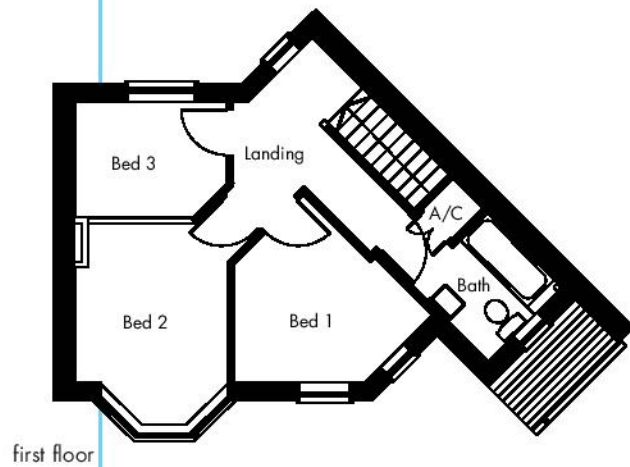
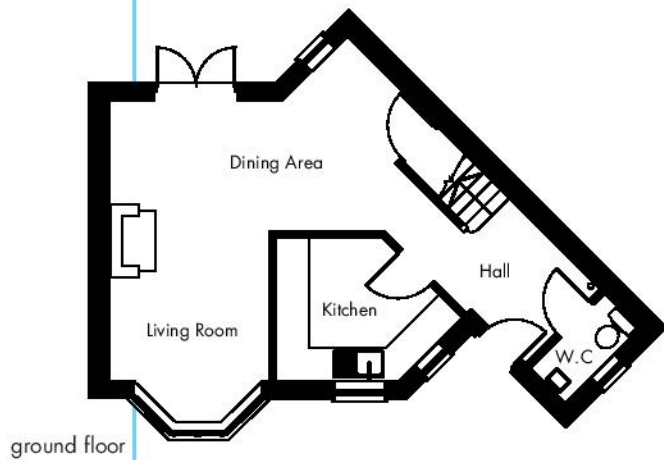


# Grassholm

Three bedroom corner link



	<i>Metric</i>	<i>Imperial</i>		<i>Metric</i>	<i>Imperial</i>
<b>GROUND FLOOR</b>			<b>FIRST FLOOR</b>		
Living Room	2.900m x 5.070m	9'7" x 16'8"	Bedroom 1	1.732m x 3.174m	5'8" x 10'5"
Kitchen	2.217m x 2.600m	7'3" x 8'7"	Bedroom 2	2.761m x 2.871m	9'1" x 9'5"
WC	0.900m x 1.895m	3'0" x 6'3"	Bedroom 3	2.743m x 2.085m	9'0" x 6'10"
Hall	2.009m x 2.996m	6'7" x 9'11"	Bathroom	1.895m x 1.900m	6'2" x 6'3"
			Landing	1.995m x 3.480m	6'7" x 11'5"